

BRIO

Modular scaffolding

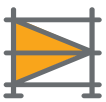


// Versatile and multifunctional



// Table of content

Features	2
Benefits	4
Solutions	6
Basic components	13

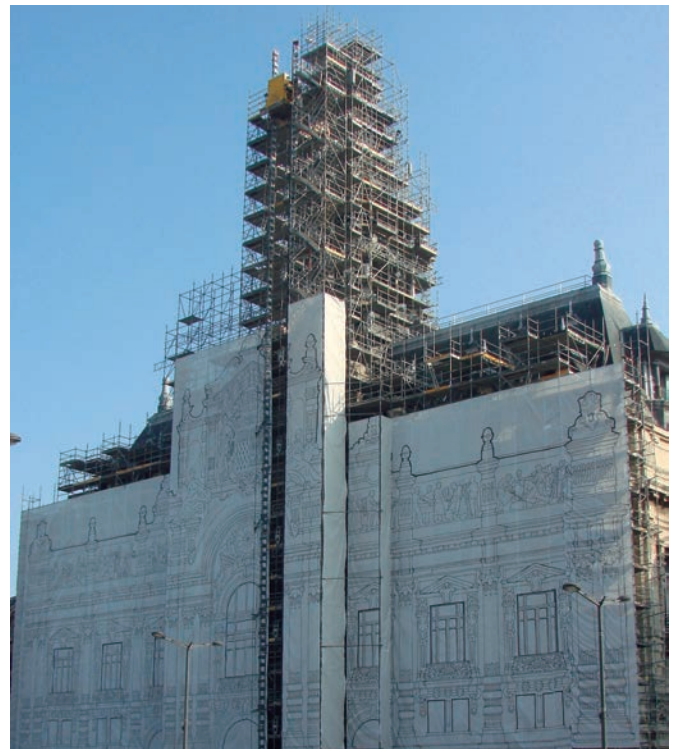


// Features

- ▶ **BRIO Modular Scaffolding** covers the **different configurations and applications** required in the construction industry.
- ▶ Used as a workplace, protection, access or support, **for newbuilds and restoration work**.
- ▶ It is a **profitable system** that can be used in all kinds of fields, such as construction, industry, energy, navy or leisure and entertainment.
- ▶ **The effective** galvanized steel **design** ensures fast, simple and intuitive assembly, with high load-bearing capacity. It makes the scaffolding **highly rigid and stable**.
- ▶ BRIO is certified according to **European standards EN 12810-1/2 and EN 12811-1/2/3**.
- ▶ Based on vertical standards **with nodes every 50 cm** that house the various components.



▶ Component connection node



▶ Irregular façade restoration

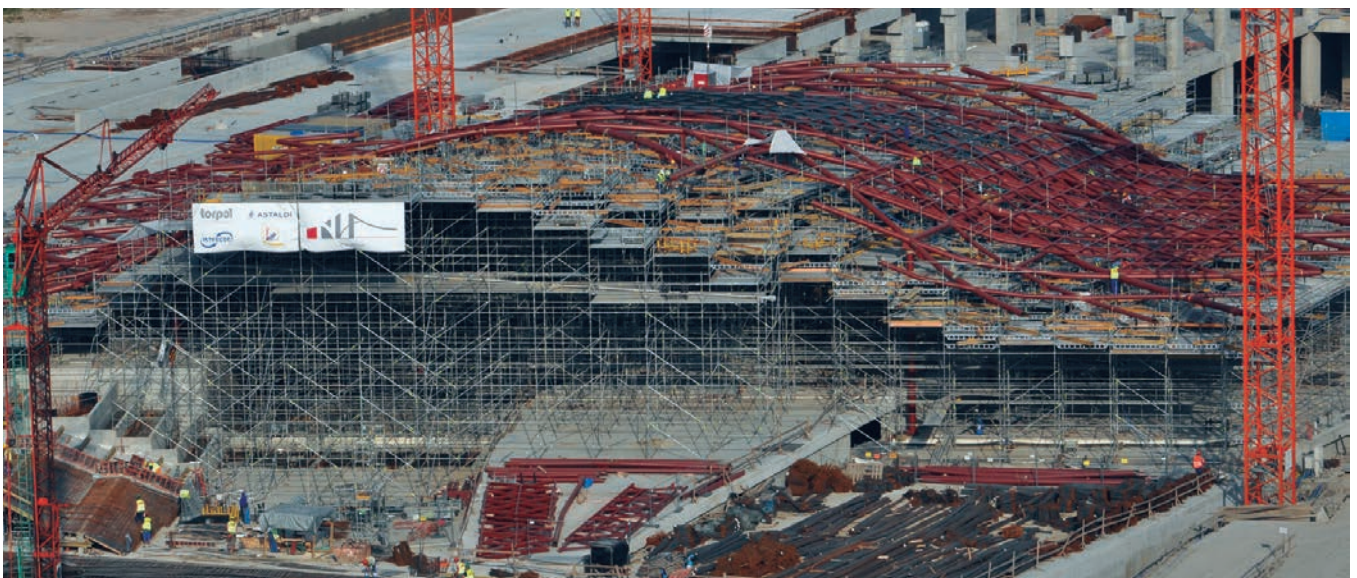
Product Certifications:



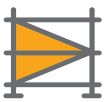
Italian Ministerial Work Authorization Number:
PROT. 15/V/12246/14.03.01.01 "BRIO 102"
PROT. 15/V/12245/14.03.01.01 "BRIO 70"

* Temporary Work Equipment NF Certification
AFNOR CERTIFICATION
11, rue Francis de Pressensé
F-93571 LA PLAINE SAINT DENIS CEDEX

Certification reference document: NF Site equipment (NF096) available on www.marque-nf.com
The NF Mark certifies the compliance with the NF EN 12810-1 and 2, NF EN 12811-1, 2 and 3 standards and with the NF096 Reference Document.
In order to refer to the NF mark, a scaffolding structure assembled from a certified model must, with regard to sub-assemblies that are subject to marking, only include those that are included in the NF nomenclature of the model.



▶ Shoring and work platform for roofing



► **Quick and easy** assembly, with a single hammer blow.



1.- Hook in the horizontal ledger



2.- Insert the wedge



3.- Fix the wedge

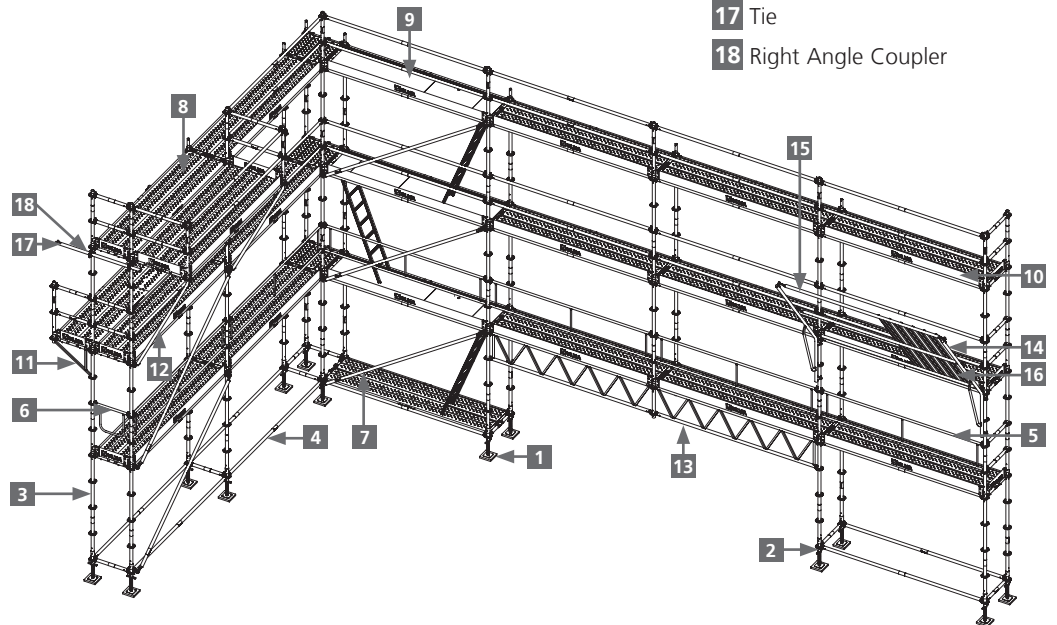


4.- Stand and ledger are joined

Basic components

- 1 Screw jack with plate
- 2 Tube with node
- 3 Vertical stand
- 4 Ledger
- 5 Handrail
- 6 Corner guardrail
- 7 Diagonal brace
- 8 Platform
- 9 Trapdoor Platform
- 10 Toeboard
- 11 Console
- 12 Cantilever
- 13 Bridging beam
- 14 Cover shield
- 15 Shield ledger

- 16 Sheet
- 17 Tie
- 18 Right Angle Coupler



► Usual façade scaffolding **widths**: 0.7 and 1.02, with 2 m in height between platforms.

► **Modules of**: 0.35; 0.7; 1.02; 1.5; 2; 2.5 and 3 m in width.

► **Class 4, 5 or 6 platforms** according to EN 12810-1/2 and EN 12811-1/2/3.



► Shoring, work platform and access



// Advantages

| Certified Scaffolding

- ▶ According to European standards, ensuring product quality.

| Versatile and flexible

- ▶ Enables infinite structures and applications.

| Compatible

- ▶ With DORPA brand scaffolding, with which it shares many common components.

| Safe system

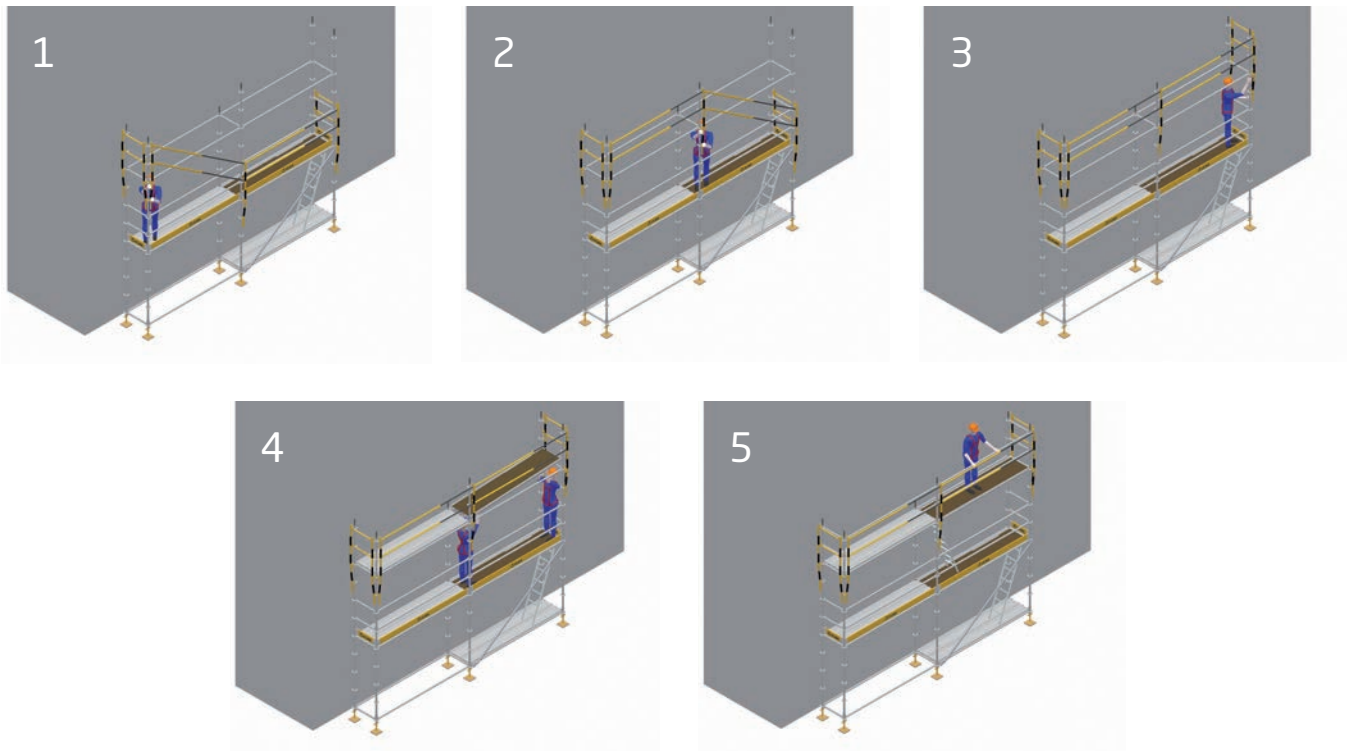
- ▶ **Safe assembly process:**

Collective protection system in place from the lowest level to protect the scaffolder when accessing the higher levels. It consists of a safety handrail post and telescopic ledgers assembled by a single operator.

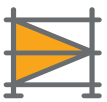
| High profitability

- ▶ **Quick and easy to assemble.**
- ▶ Reduced number of parts.
- ▶ **Durability.** Hot dip galvanized protection against corrosion.
- ▶ Reusable in various applications on a site.
- ▶ Simple transport, storage and maintenance.

Safety handrail post verified according to requirements of EN 795 (fall protection anchorage devices).



▶ Safety handrail post assembly sequence



► **Safety** in use:

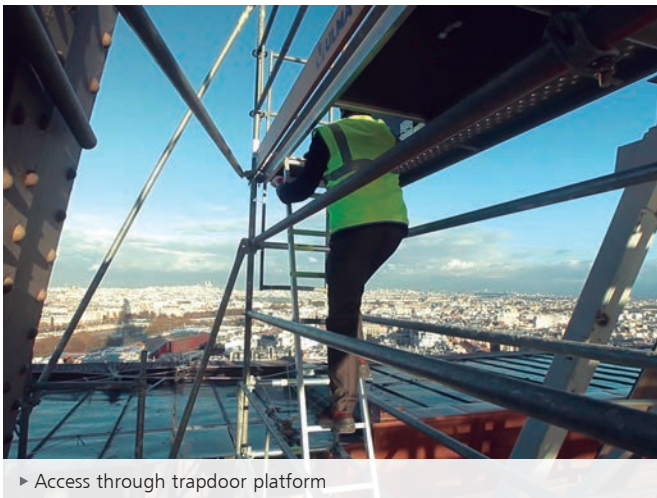
Platforms, handrails and toeboards to protect the user from falling.

Safe access through trapdoor platforms or attached ladders, according to scaffolding height.

Non-slip platforms with safety system fitted with a cotter pin which prevents accidental movement.

► **Safety for third parties:**

Protection and configurations such as pedestrian walkways or protection fans. They allow the free movement of pedestrians and vehicles without any risk.



► Access through trapdoor platform



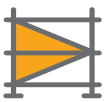
► Simple and safe assembly



► Access scaffolding by attached ladders



► Safe movement of pedestrians



// Solutions

| Covering façades / irregular geometries

Usual application as working platforms and access on regular and irregular façades.



► Façade restoration



► Restoration of complex geometries

| Scaffolding tower

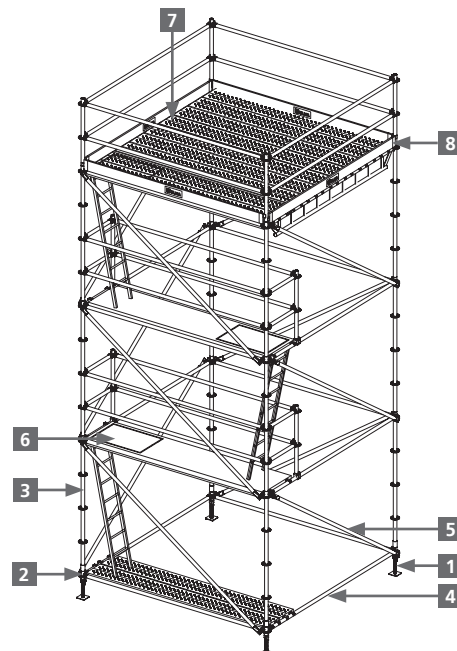


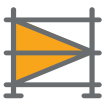
► Scaffold towers in column construction

- Work platform up to 12 m in height without stabilizers.
- Fixed or mobile.
- Hoistable and portable by crane.

► Tower components

- 1** Screw jack with plate
Screw jack with wheel
- 2** Tube with node
- 3** Vertical stand
- 4** Ledger
- 5** Diagonal brace
- 6** Trapdoor Platform
- 7** Platform
- 8** Toeboard





Ladders

► **Safe access** to any point.

- 3 x 1.5 (4 feet) with complementary platform or landing deck.
- 3 x 1.4 (6 feet).
- 3.4 x 15 (8 feet).

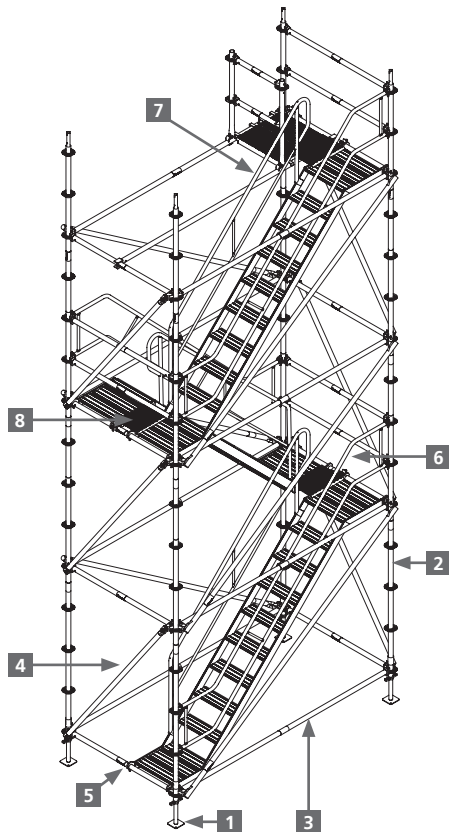
► **Advantages:**

- Capable of reaching great heights.
- Moveable by crane.
- Stable and safe access surface.
- Ladder widths of 0.70 m and 1.02 m according to need.
- Possibility of different landings.
- It allows assembly of semi-detached ladder to the scaffolding.
- Aluminium or steel stringers.



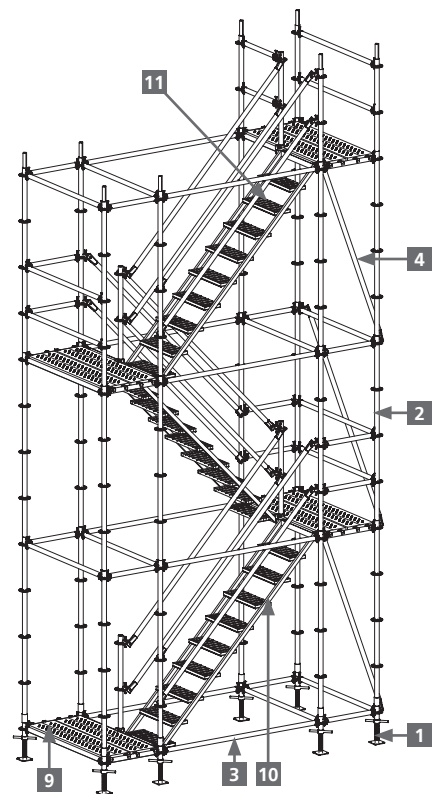
► Ladder to access the stack

► **Ladder components**

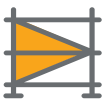


► Stair tower 3 x 1.5 with aluminium stringer

- 1 Screw jack with plate
- 2 Vertical stand
- 3 Ledger
- 4 Diagonal brace
- 5 Aluminium ladder
- 6 Outer handrails
- 7 Inner handrails
- 8 Complementary platform
- 9 Platform
- 10 Ladder stringer
- 11 Metal tread



► Stair tower 3.4 x 1.5 with steel stringer



BRIO falsework

- ▶ **Falsework shoring system** such as ENKOFLEX, VR, BTM and ENKOFORM HMK Tables, all formed by primary and secondary boards and beams.
- ▶ **Wide range** of tower modulation: 0.35; 0.7; 1.02; 1.5; 2; 2.5 and 3 m.
- ▶ Optimized load-bearing capacity for building works.



▶ Safe construction of cantilever slabs



▶ Slabs at great heights



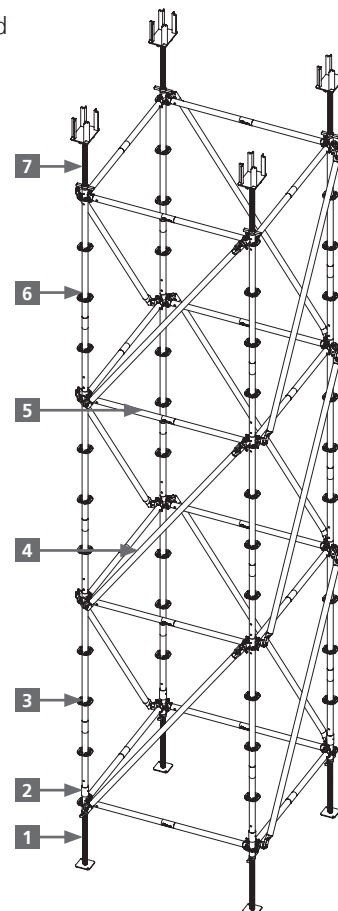
▶ Safe falsework assembly

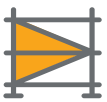
▶ Advantages:

- Safe falsework assembly using scaffolding platforms.
- Protected falsework. Working platforms and handrails on the top level for placement of falsework.
- Possibility of hoisting and moving, after screwing the feet.
- Assembly of individual towers or packed shoring towers.
- Excellent height adjustment.

▶ BRIO falsework components

- 1 Screw jack
- 2 Base collar
- 3 Foot
- 4 Diagonal brace
- 5 Ledger
- 6 Stand without spigot
- 7 Head





Circular Solutions

- ▶ It allows **building of curved geometries**. Very safe on any job, such as industrial maintenance.



▶ Tank maintenance



▶ Chimney maintenance

Roofing

- ▶ Ensures an **open, comfortable and protected** space for restoration work, pavilions, etc.
- ▶ Pre-assembled on the ground and hoisted by crane.
- ▶ Components: beams and supports, sheets, standard BRIO scaffolding items.



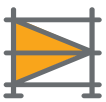
▶ Creation of spaces for restoration work

Footbridges/Public Stairs

- ▶ Temporary structures with widths adapted to each need.
- ▶ They provide safe passage for pedestrians.



▶ Safe footbridge



Roof-edge protection

- ▶ Solves the roof-edge protection using a net or metal perimeter wall.
- ▶ Edge protection verified in accordance with NF mark rules based on Standard EN 13374:2004, class C.



▶ Roof-edge protection work on the roof edge

Stabilization of façades

- ▶ Market-oriented restoration and maintenance of buildings, combines simplicity and safety.

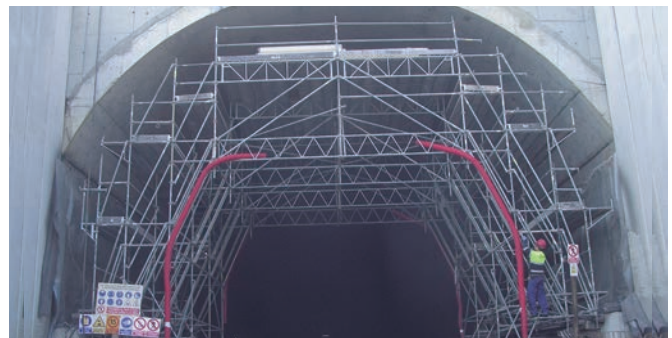


▶ Façade stabilized using BRIO scaffolding

Special solutions



▶ Bridge restoration



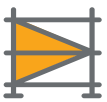
▶ Mobile trolleys



▶ Suspended working platform to work under the roof



▶ Leisure and entertainment applications



| Scaffolding for industry

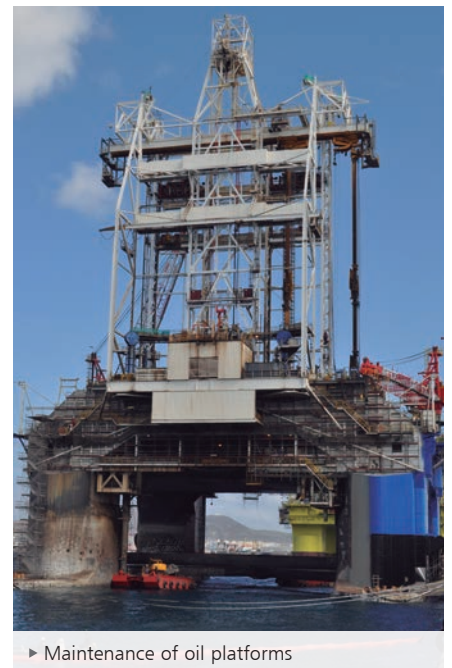


► Maintenance in petrochemical facilities

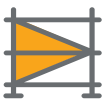


► Maintenance and construction in the mining industry

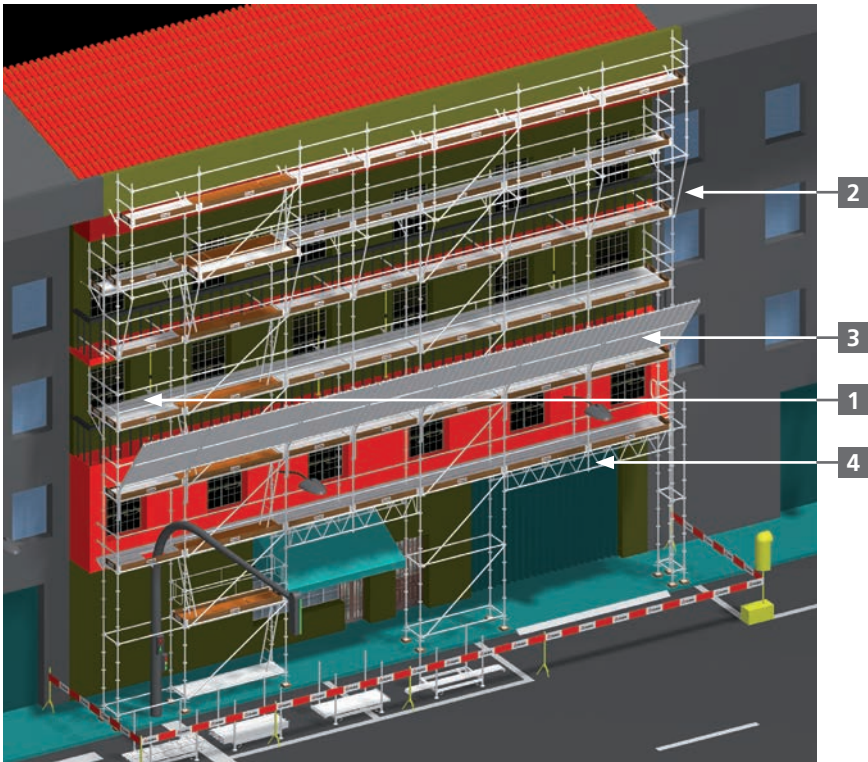
- Working platforms and safe access for all industrial maintenance needs



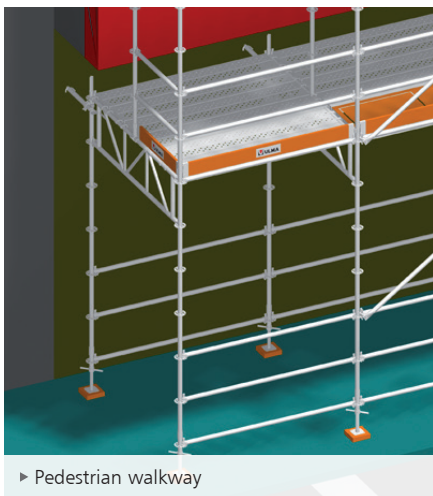
► Maintenance of oil platforms



Technical solutions



- 1 Console
- 2 Cantilevers
- 3 Protection fans
- 4 Vehicle passageway



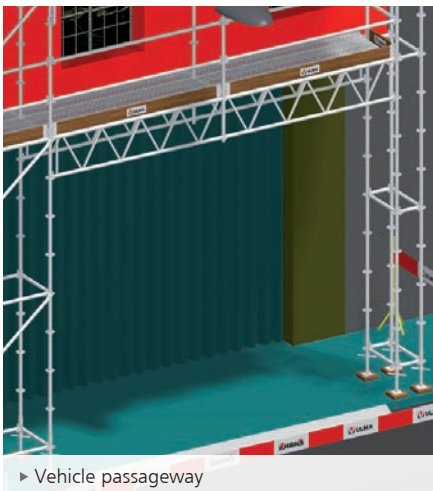
► Pedestrian walkway



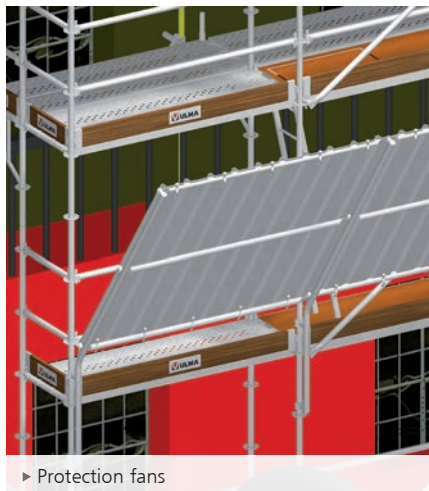
► Console



► Cantilevers



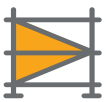
► Vehicle passageway



► Protection fans



► Other solutions

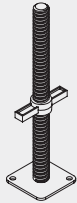


Basic components

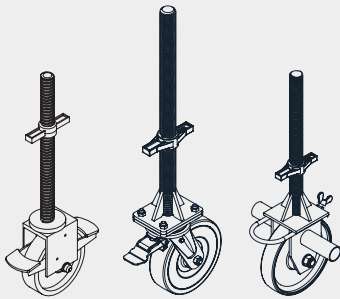
|--|--|--|

SCREW JACKS

NF Adjustable base 0.5	2124902	4.9
NF Adjustable base 1	2124907	8.7



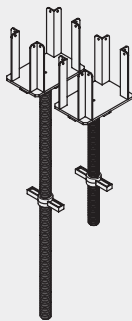
Castor 200	2127961	11.8
Swivel castor 250 with jack 38	2129690	21.9
Jack 38 w/wheel 250/1250 Kg	2127242	11.8



Handle lock	2129485	1.6
-------------	---------	-----

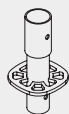


Adjustable head 0.5	2127973	8.8
Adjustable head 1	2127960	12.9



STANDARDS

NF Base collar	2127510	1.4
----------------	---------	-----



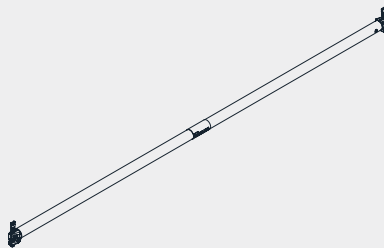
|--|--|--|

NF Standard 1	2127500	4.6
NF Standard 1.5	2127501	7.4
NF Standard 2	2127502	9
NF Standard 3	2127503	13.6
Standard 4	2127956	17.8

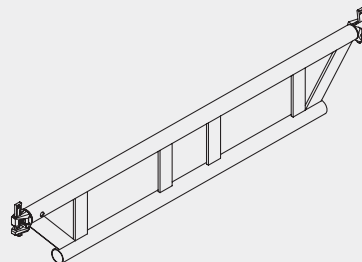


HORIZONTAL ITEMS

Ledger 0.35	2127985	1.8
NF Ledger 0.7	2127522	2.9
NF Ledger 1.02	2127523	4
NF Ledger 1.5	2127524	5.5
NF Ledger 2	2127525	7.2
NF Ledger 2.5	2127526	8.8
NF Ledger 3	2127527	10.4



NF Platform support 1.5	2127733	12.2
NF Platform support 2	2127728	17
NF Platform support 2.5	2127724	20.1
NF Platform support 3	2127719	23.9



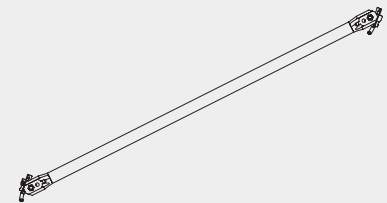
|--|--|--|

DIAGONALS

Diagonal 0.35x2 (width x height)	2129411	8
NF Diagonal 0.7x2	2127540	8.2
NF Diagonal 1.02x2	2127541	8.5
NF Diagonal 1.5x2	2127617	9.2
NF Diagonal 2x2	2127542	10.2
NF Diagonal 2.5x2	2127618	11.3
NF Diagonal 3x2	2127543	12.5

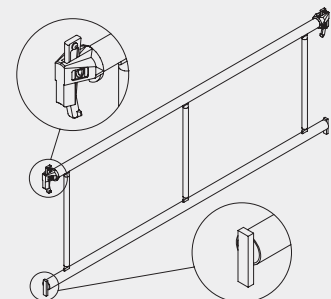
Diagonal 0.7x1	2127896	5.2
Diagonal 0.7x1.5	2127897	6.6
Diagonal 1.02x1	2127898	5.8
Diagonal 1.02x1.5	2127899	7
Diagonal 1.5x1	2127900	6.9
Diagonal 1.5x1.5	2127901	7.9
Diagonal 2x0.5	2128241	7.6
Diagonal 2x1	2127902	8.1
Diagonal 2x1.5	2127903	9
Diagonal 2.5x1	2127904	9.5
Diagonal 2.5x1.5	2127905	10.2
Diagonal 3x1	2127906	10.9
Diagonal 3x1.5	2127907	11.5

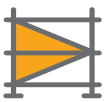
(width x height)



GUARDRAIL ITEMS

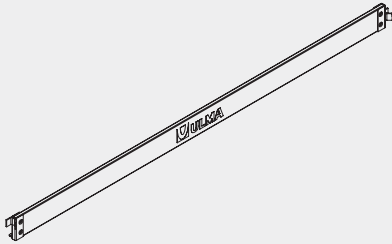
Guardrail 1.5	2127554	7.6
Guardrail 2	2127555	9.2
Guardrail 2.5	2127556	11.8
Guardrail 3	2127557	12.8





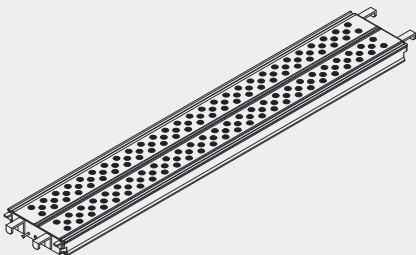
Basic components

		kg
NF Toeboard 0.7	2124998	2.6
NF Toeboard 1.02	2124999	3.2
NF Toeboard 1.35	2128127	3.9
NF Toeboard 1.5	2124994	4.2
NF Toeboard 2	2124995	5.2
NF Toeboard 2.5	2124996	6
NF Toeboard 3	2124997	6.8

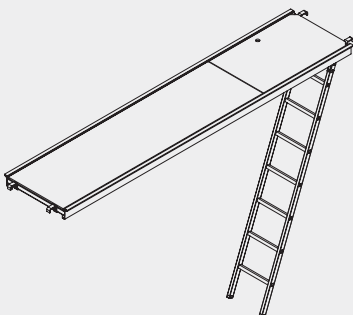


WORKING PLATFORMS

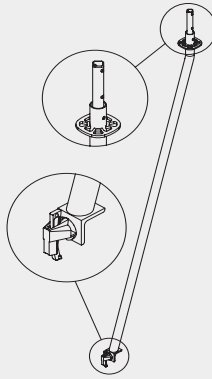
NF Platform 0.7	2127718	6.6
NF Platform 1.02	2127717	9
NF Platform 1.5	2127716	12.4
NF Platform 2	2127715	17
NF Platform 2.5	2127714	20.2
NF Platform 3	2127713	22.2



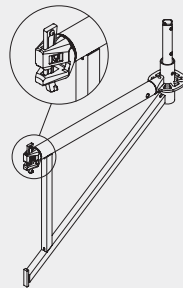
Trapdoor platform 1.02	2129617	7.9
Trapdoor platform 1.5	2128152	13.5
NF Trapdoor platform 2	2127868	18.6
NF Trapdoor platform 2.5	2127867	25.8
NF Trapdoor platform 3	2127712	31



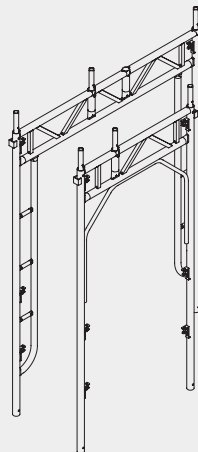
		kg
ITEMS OR ACCESSORIES		
Cantilever 0.7	2127739	9
Cantilever 1.02	2127745	10



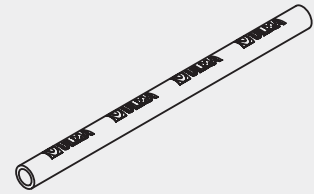
Console 0.2	2127234	1.1
NF Console 0.32	2127679	2.3
NF Console 0.7	2127680	6.6
NF Console 1.02	2127681	9.7



Gangway frame 0.9	2125486	30
NF Gangway/passage frame 1.65	2125175	46.4

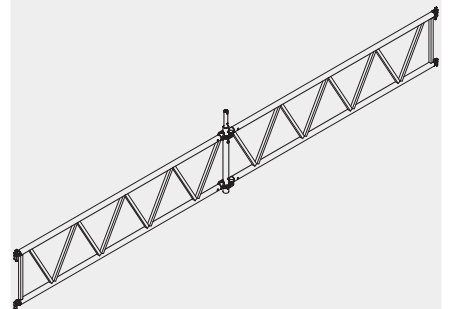


		kg
Protector tube	2125667	0.28

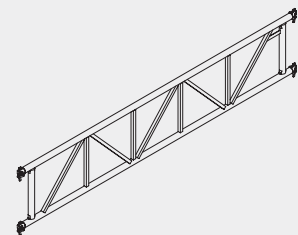


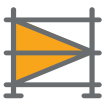
BEAMS

NF Bridging beam 4	2127706	44
NF Bridging beam 5	2127702	56
NF Bridging beam 6	2127693	68



Passage beam 1.02	2128052	12.6
Passage beam 1.5	2128081	16.3
Passage beam 2	2128082	23.4
Passage beam 2.5	2128083	30
Passage beam 3	2128084	35





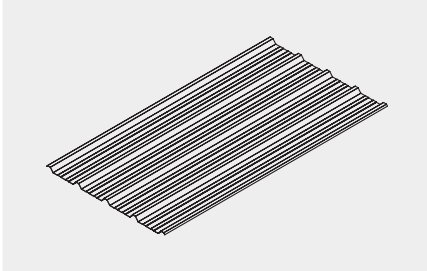
Basic components

|--|--|--|

PROTECTION FAN		
Cover shield	2125316	12.3

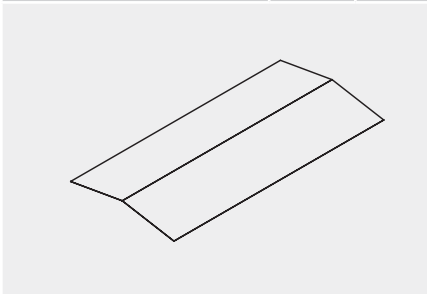


Sheet PL	2125705	12.8
----------	---------	------

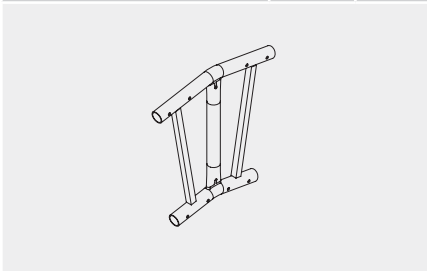


ROOF COVERING

Ridge plate	2125678	9.4
-------------	---------	-----

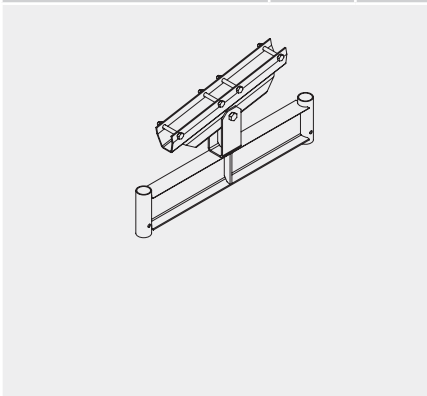


Ridge	1500236	7.5
-------	---------	-----



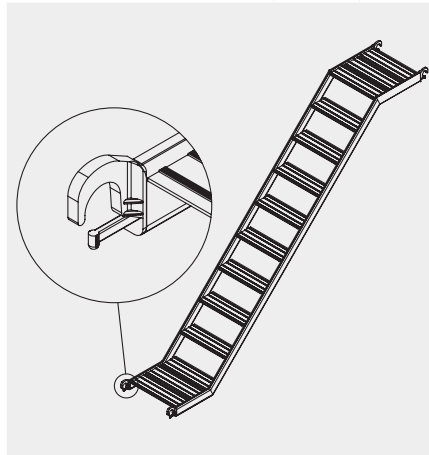
Roof support 0.7	2129558	16.1
------------------	---------	------

Roof support 1	2129225	20
----------------	---------	----

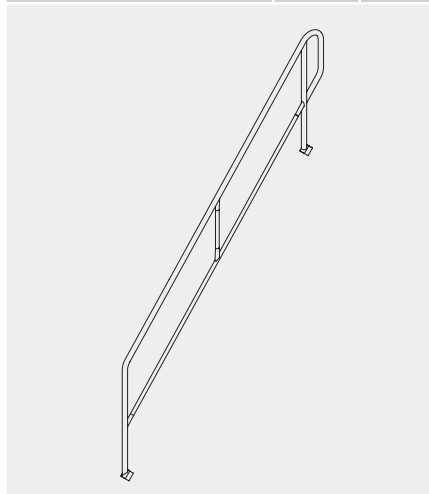


|--|--|--|

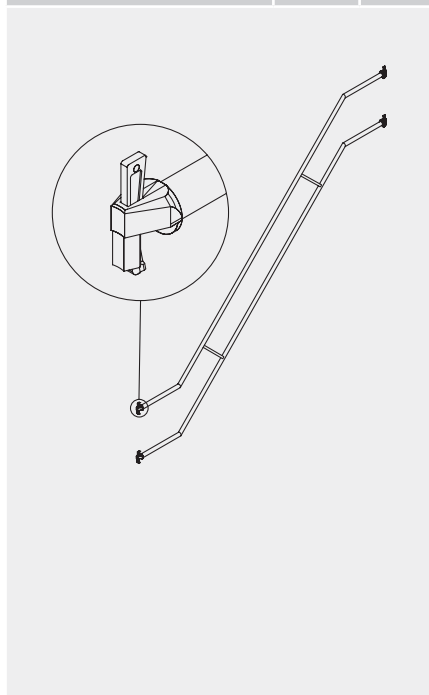
BRIO STAIR		
Aluminium stair 3x2	2127711	24.6



Inner guardrail 3x2	2127999	15.4
---------------------	---------	------

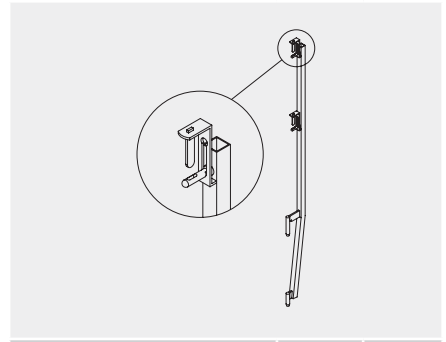


Outer guardrail BRIO 3x2	2127777	17
--------------------------	---------	----



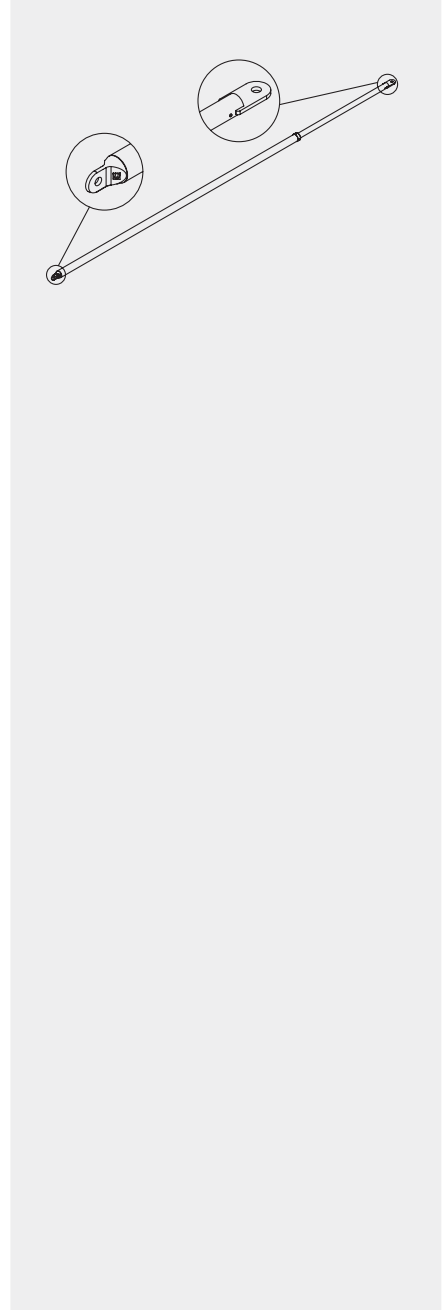
|--|--|--|

ASSEMBLY SAFETY ITEMS		
BRIO safety guardrail post	2128193	3.9

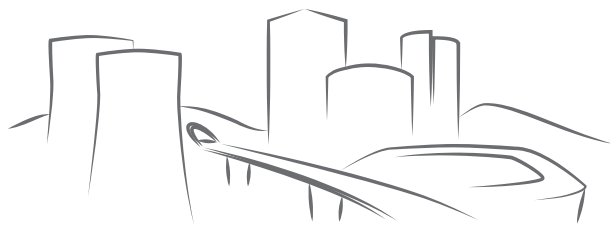


Safety ledger 3-2	2128194	4.8
-------------------	---------	-----

Safety ledger 1.5	2129310	3.8
-------------------	---------	-----



NF: Items with NF certification



From the beginning of your projects



ULMA C y E, S. Coop.

Ps. Otadui, 3 - P.O. 13

20560 Oñati, Spain

T. +34 943 034 900

F. +34 943 034 920

07E288ENM

►► www.ulmaconstruction.com

IMPORTANT:

Any safety provisions as directed by the appropriate governing agencies must be observed when using our products. The pictures in this document are snapshots of situations at different stages of assembly, and therefore are not complete images. For the purpose of safety, they should not be deemed as definitive. All of the indications regarding safety and operations contained in this document, and the data on stress and loads should be respected. ULMA's Technical Department must be consulted anytime that field changes alter our equipment installation drawings. The loads featured in this document, related to the basic elements of the product, are approximate. Our equipment is designed to work with accessories and elements made by our company only. Combining such equipment with other systems is not only dangerous but also voids any or all our warranties. The company

reserves the right to introduce any modifications deemed necessary for the technical development of the product. All rights reserved. Neither all nor part of this document may be reproduced or transmitted in any way by any electronic or mechanical procedure, including photocopy, magnetic recording or any other form of information storage or retrieval system without the written permission.

© Copyright by ULMA C y E, S. Coop