

ENKOFLEX

Timber beam slab formwork



// Flexible and versatile



// Table of content

Features	2
Benefits	3
Solutions	5
Basic components	7





// Features

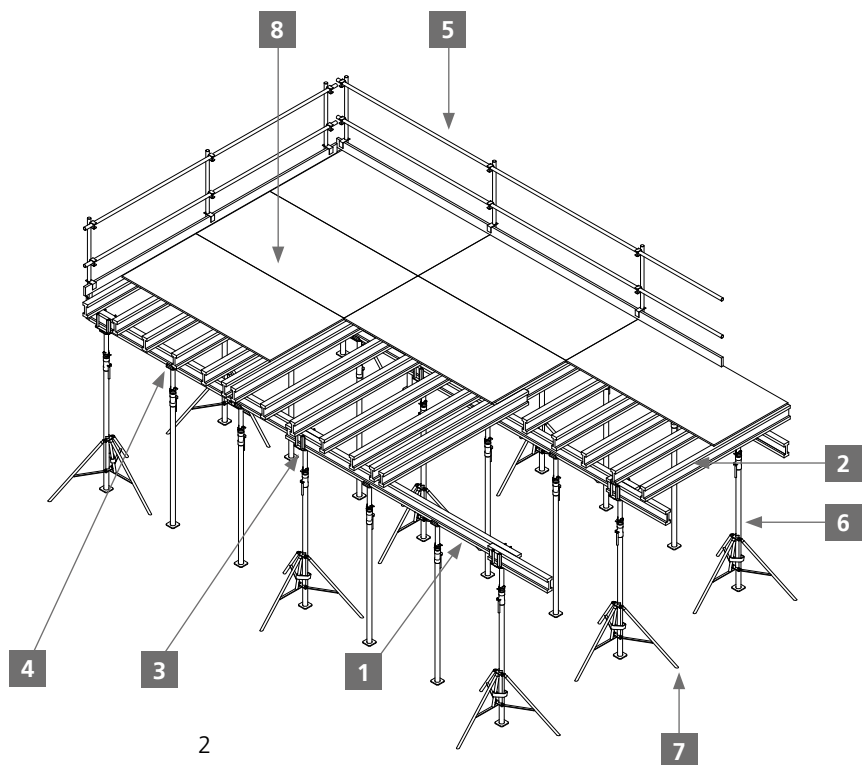
- ▶ **System adaptable** to any type of slab and height. Independent beams provide **great flexibility**.
- ▶ Moldable to **irregular geometries** and to other formwork systems for easy infilling.



▶ A large range of high-performance slabs

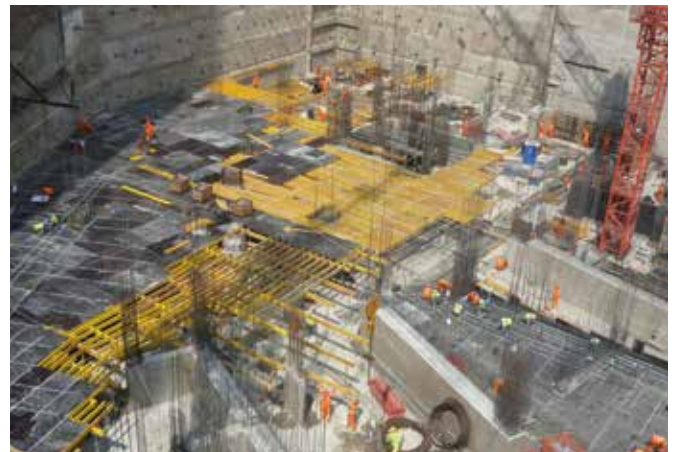
Components:

- 1 VM-20 primary beams
- 2 VM-20 secondary beams
- 3 Double head
- 4 Single head VR
- 5 Safety handrail
- 6 Prop
- 7 Tripod
- 8 Board





► Very similar to formwork



► Surface formwork with interferences



► Adaptable to all types of geometries

// Advantages

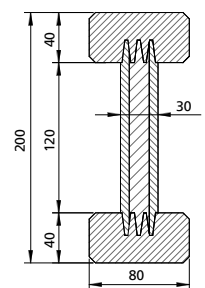
► Certified components

- Timber beam VM-20
 - **Certified in accordance with European standard EN 13377** for prefabricated wooden beams for formwork.

- **PEFC** : Chain of custody.



► High quality timber beam, main component of the system



► Beam Sizes (mm)

- Three-layer plywood
 - **PEFC** : Chain of custody.



- Phenolic plywood
 - **FSC®** : The material used for this component has been responsibly sourced.





► **All-round solution**

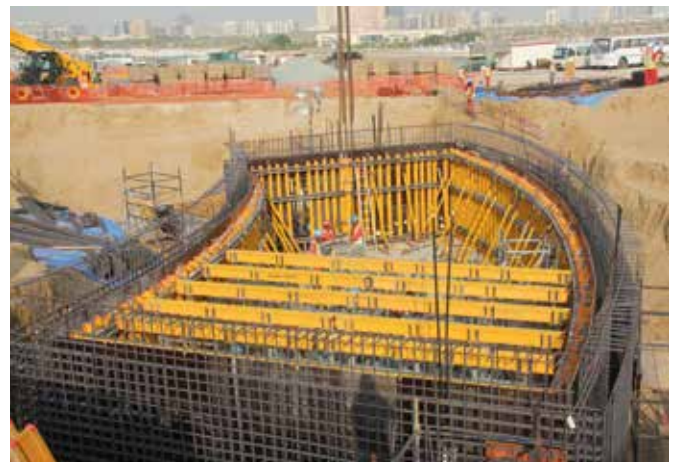
- **Very versatile** for different slabs and heights based on the beams grid and shoring used.
- Option to **shore with prop or falsework**, depending on the height.
- **Simple and easy to assemble.**
- **Small number of items:** wooden beams, heads, board and shoring system.



► Inclined surface with ENKOFLEX on the falsework



► Laying slabs with an irregular geometry



► Easy laying between walls with ENKOFLEX

- Amount of material adaptable to the thickness of the slab.
- Complies with the most demanding concrete **finishing requirements** as you can choose the board for any circumstance.
- **Durability** of the beams: edges protected with a covering for knocks and damp.



// Solutions

| Shoring with prop



► Shoring with certified EP steel prop



► Shoring with SP prop

| Shoring with falsework



► Shoring of large loads with ALUPROP towers



► Formwork assembly platforms on falsework tower



► Shoring at a height with T-60 falsework



► Stable shoring with BRIO falsework



► Shoring on a building construction with G falsework



Technical solutions

► Drop beam



► Construction of intermediate and perimeter drop beams



► Wooden beams at different levels

► Infilling on wall



► Formwork against a single wall with overlapping beams

► Infilling on column



► Stable support of the board on infillings on column

► Curved slabs



► Laying curved slabs with falsework at different heights





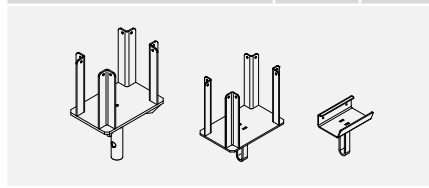
► Slabs laid with vertical ENKOFLEX with steel props, aluminium towers and falsework

Basic components

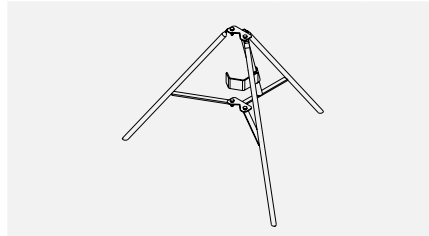
TIMBER BEAMS		
Timber beam VM 20/1.45	1940191	8
Timber beam VM 20/1.9	1940172	9.5
Timber beam VM 20/2.15	1940197	10.8
Timber beam VM 20/2.45	1950129	12.3
Timber beam VM 20/2.65	1940196	13.3
Timber beam VM 20/2.9	1940144	14.5
Timber beam VM 20/3.3	1950130	16.5
Timber beam VM 20/3.6	1940146	18
Timber beam VM 20/3.9	1950112	19.5
Timber beam VM 20/4.5	1940178	22.5
Timber beam VM 20/4.9	1950113	24.5
Timber beam VM 20/5.9	1940149	29.5



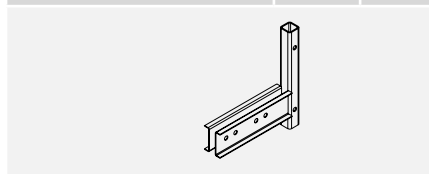
HEADS		
Double head VR	2211003	4.7
ECO double head	2211450	2.5
Simple head VR	2211000	0.73



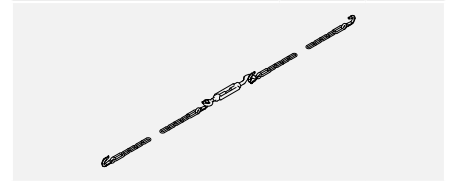
Tripod 42-87 mm	2170355	7
-----------------	---------	---



SAFETY ITEMS		
VM handrail support	2211165	6.9

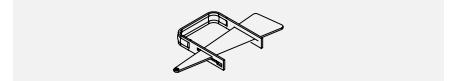


Chain VR 7.5 kN	2211750	6.3



MISCELLANEOUS AND AUXILIAR

Clamp SP-EP	2170356	1.6
-------------	---------	-----

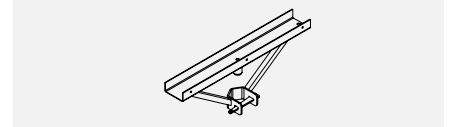


Stop-end corner	2170358	1.1
-----------------	---------	-----



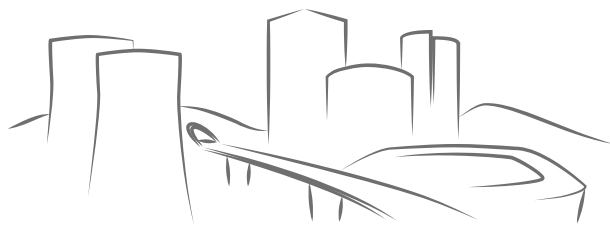
Cross prop SP-30	2170365	3.7
------------------	---------	-----

Cross prop SP 35-40	2170360	3.7
---------------------	---------	-----



Clamp VM-VM	2211250	0.72
-------------	---------	------





From the beginning of your projects



ULMA C y E, S. Coop.

Ps. Otadui, 3 - P.O. 13

20560 Oñati, Spain

T. +34 943 034 900

F. +34 943 034 920

04E018ENM

►► www.ulmaconstruction.com

IMPORTANT:

Any safety provisions as directed by the appropriate governing agencies must be observed when using our products. The pictures in this document are snapshots of situations at different stages of assembly, and therefore are not complete images. For the purpose of safety, they should not be considered as definitive. All indications regarding safety and operations contained in this document must be strictly observed and fulfilled with all the preventive measures included in the labour legislation and the risk assessment issues, as applicable on the jobsite. ULMA Construction must be consulted on any changes of any type, since new calculations will be required. Our equipment is designed to work with accessories and elements made by our company only. Combining such equipment with other systems is not only dangerous but also voids any or all our warranties. The company reserves

the right to introduce any modifications whenever consider necessary for the technical development of the product. All rights reserved. Neither all nor part of this document may be reproduced or transmitted in any way by any electronic or mechanical procedure, including photocopy, magnetic recording or any other form of information storage or retrieval system without written permission.

© Copyright by ULMA C y E, S. Coop.